

European perspective on COVID-19 data and comparability



HELICONference
April 27 2022

Data needs during the COVID-19 pandemic

- Need to identify data needs
- Need to identify available population health data
- Need for information on how to access these data
- Need to mobilize these data (in a timely manner)
- Need for innovative solutions for handling and analyzing sensitive health data
- Need for sharing data across institutions and across borders
- Need to exchange information on population health across borders

→ Sounds familiar? These needs were also there BEFORE the crisis

→ The crisis has magnified these needs and brought them to the spotlight

History of addressing data needs on EU level

- **BRIDGE Health (2015-2017)**

- 31 partners in 16 countries representing 14 population health research networks in 9 population health research domains.

→ Concluded there is need for a Research Infrastructure (RI) on population health research



- **InfAct Joint Action (2018-2021)**

- 40 partners from 28 EU countries: 20 public health or research institutes, 13 ministries, 3 universities and 4 others

→ Providing proof of concept by piloting RI elements



Map with InfAct Partners



November 2020: PHIRI

The Population Health Information Research Infrastructure for COVID-19:

- a **European mechanism**, that aims to
- facilitate and support **data-driven population health research**
- and **exchange of best practices**
- to support **decision making**

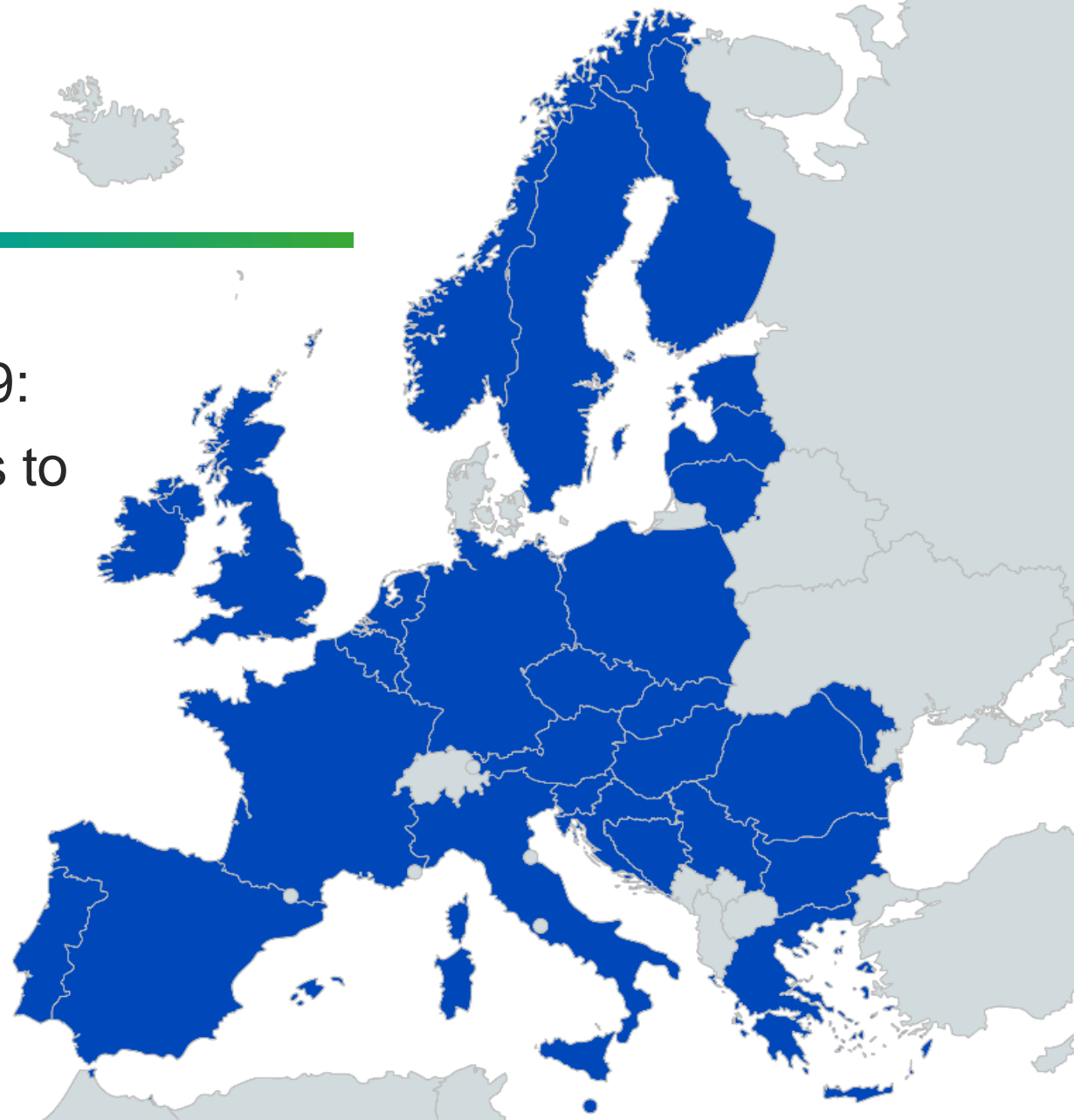
DG RTD
€5m

3 years

Coordinator:
Sciensano



www.phiri.eu



Map of PHIRI Partners



This project has received funding from the European Union's Horizon 2020 research and innovation programme under grant agreement No 101018317



Unique collaborations

PHIRI is a strong network of 41 partners in 30 European countries

- 27 National Institute of Public Health or Research or Disease Control
- 7 Universities
- 7 Ministries of Health

COVID: Need for a rapid exchange of information across borders: policy and research questions

Rapid Exchange Forum (REF)

- The Rapid Exchange Forum is a **structured platform for regular quick exchange of fellow countries, policy advisors, commission services and researchers** in the joint efforts to manage the COVID-19 pandemic

Rapid Exchange Forum (REF)



28

Participating countries

34

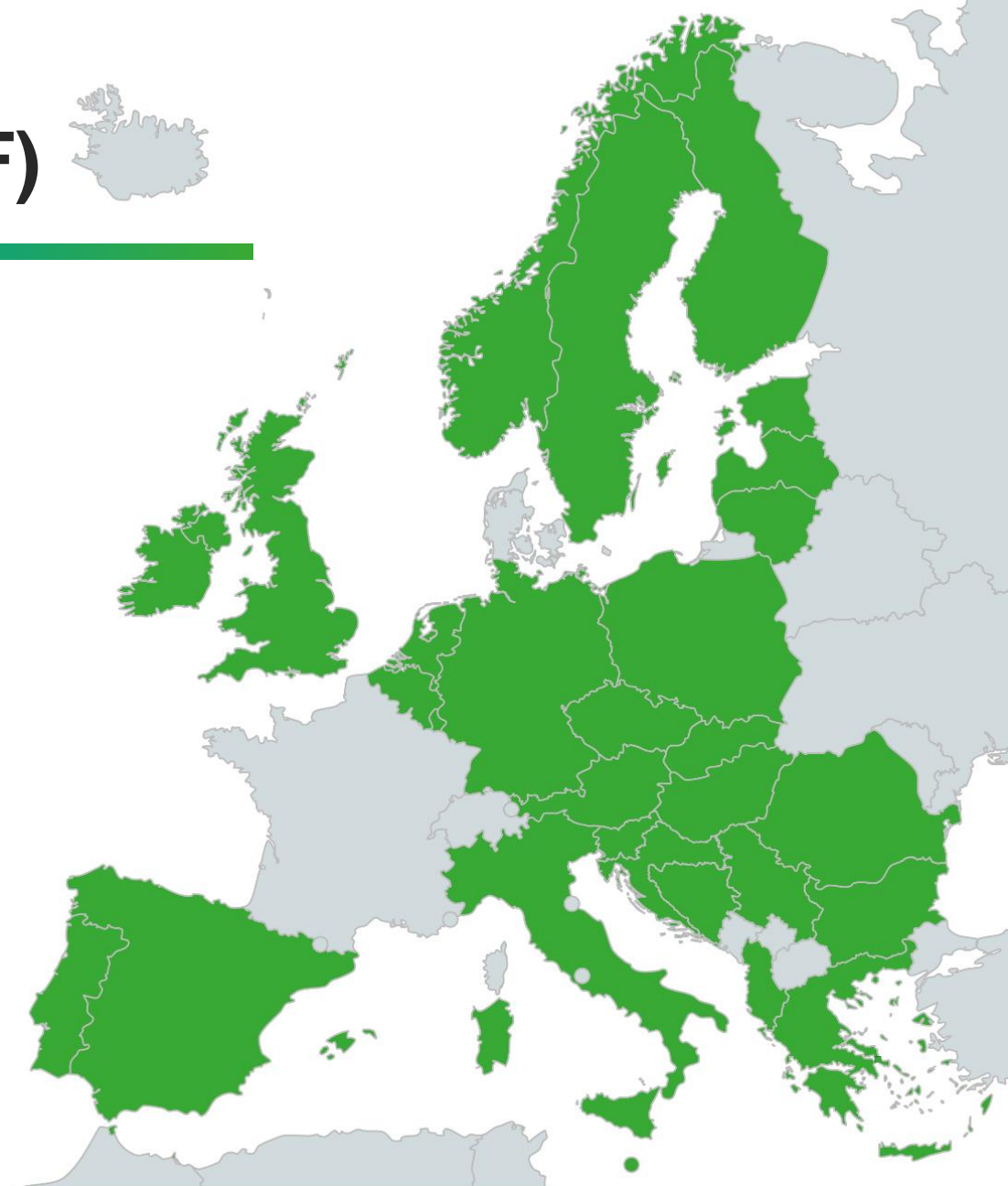
Rapid Exchange meetings

5

Special editions and webinars

85+

Questions answered



Rapid Exchange Forum ([REF](#))



**Certificates
vaccination
recovery**



Booster doses



**Mental health
of general population
of healthcare workers**



**Variants of interest
Variants of concern**



Testing school children



Long COVID



Rapid Exchange Forum (REF)

3 examples:

1. Counting of COVID-19 deaths (discussed in April 2020)
 - Huge differences between European countries (suspected cases, positive cases, deaths in nursing homes)
 - Impact on policies and data comparability
2. Vaccination (discussed May 2021)
 - Different rules for recovery certificates, travel certificates (green passes)
 - Differences in use for travel versus local purposes
3. Long term pandemic monitoring and surveillance (February 2022)
 - State of emergency and/or similar existing temporary legal instrument for an epidemic or pandemic state invoked during the outbreak of COVID-19
 - State-of emergency or emergency legislation prolonged in many countries in absence of long term strategies



RAPID EXCHANGE FORUM



COVID-19 POLICY MEASURES

Welcome to the **one-stop shop** that
facilitates access to population health and
health care data, information and
expertise across Europe

FIND DATA

Fulltext Search

Country

- None - ▾

SEARCH



RAPID EXCHANGE FORUM

COVID-19 POLICY MEASURES

Welcome to the **one-stop shop** that
facilitates access to population health and
health care data, information and
expertise across Europe

FIND DATA

Fulltext Search

Country

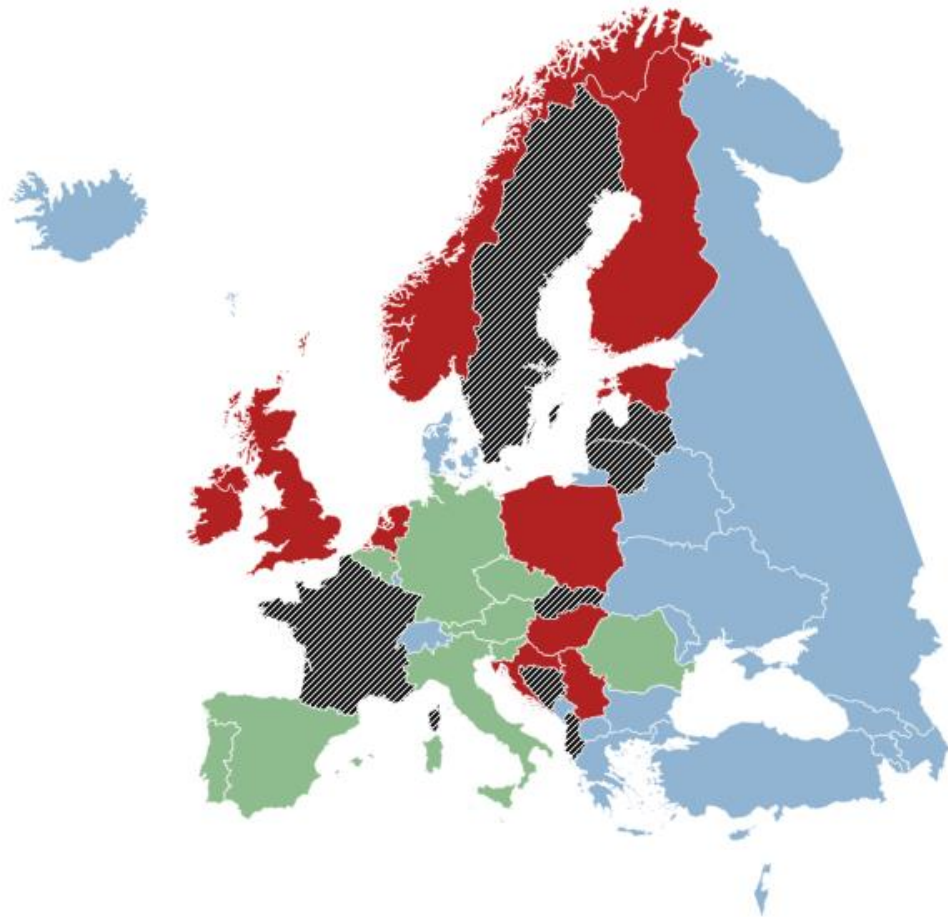
SEARCH

- countries with policy measures available
- countries without policy measures available

Choose a Country ▼

- or -

Measures for public transport ▼



POLICY MEASURES FOR COVID-19 MAP LEGEND

- policy measures applied in the country
- policy measures not applied in the country
- other, policy measures are further specified
- data for this policy measure are missing

Innovative solutions

4

Use cases

First results: Q2 2022



Direct and indirect determinants of COVID-19 infection and outcomes in vulnerable population groups with reference to inequalities



COVID-19 related delayed care in breast cancer patients



The impact of COVID-19 on perinatal health and perinatal health inequalities

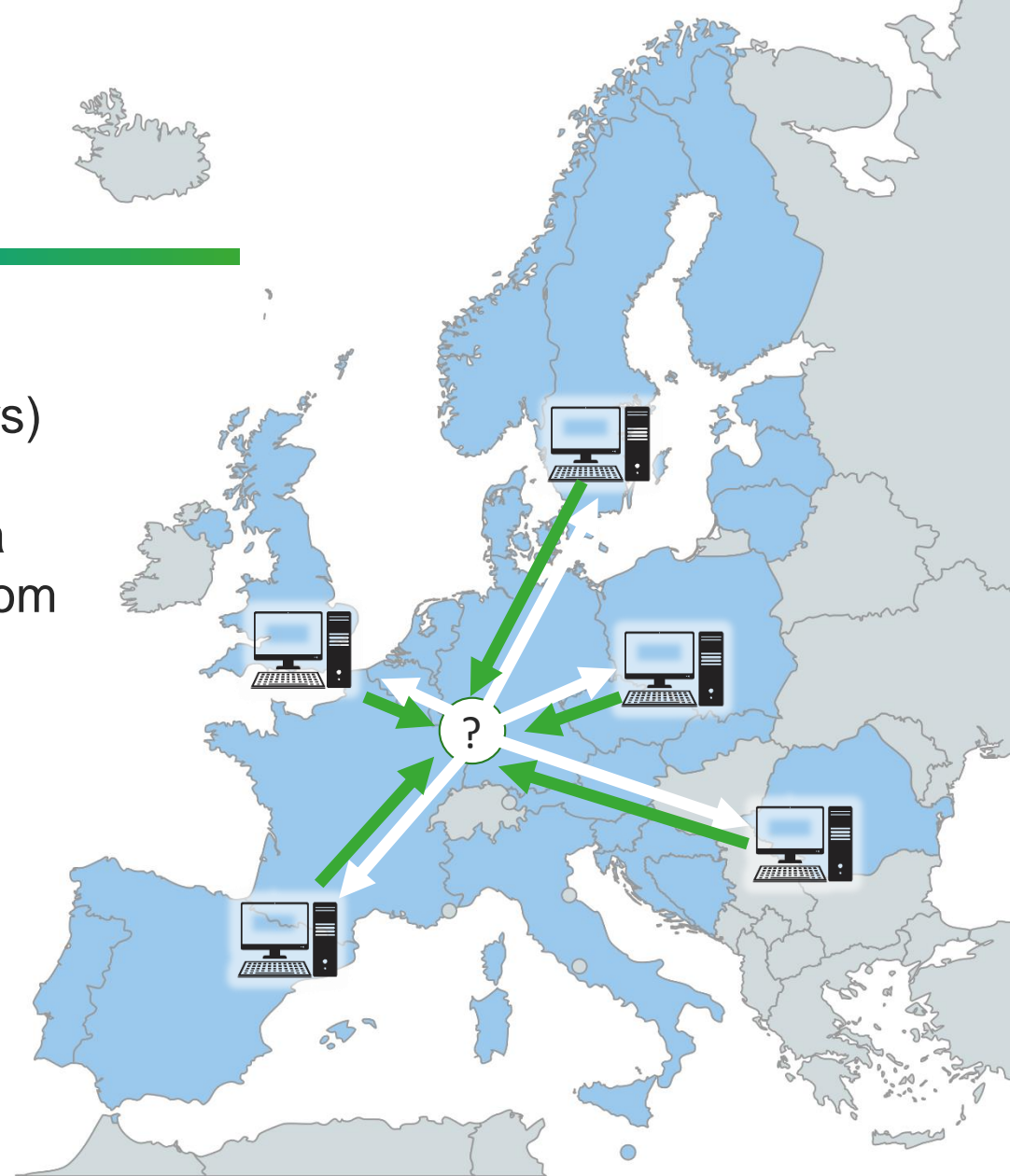
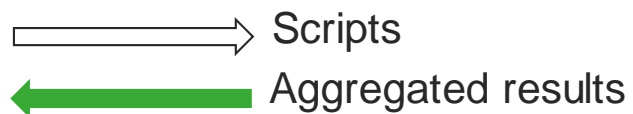


COVID-19 related changes in population mental health

Federated solution

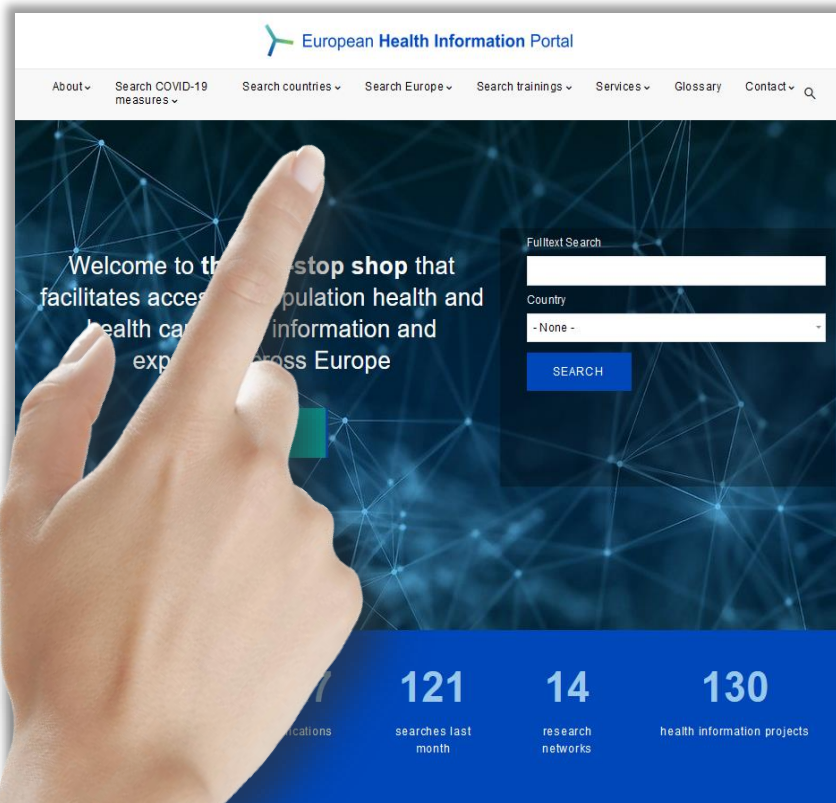
Data reuse and data sharing hindrances (national legislation, GDPR, cultural issues, technical barriers)

Pilot activities for the benefits and added value of a research infrastructure by bringing together data from different European countries

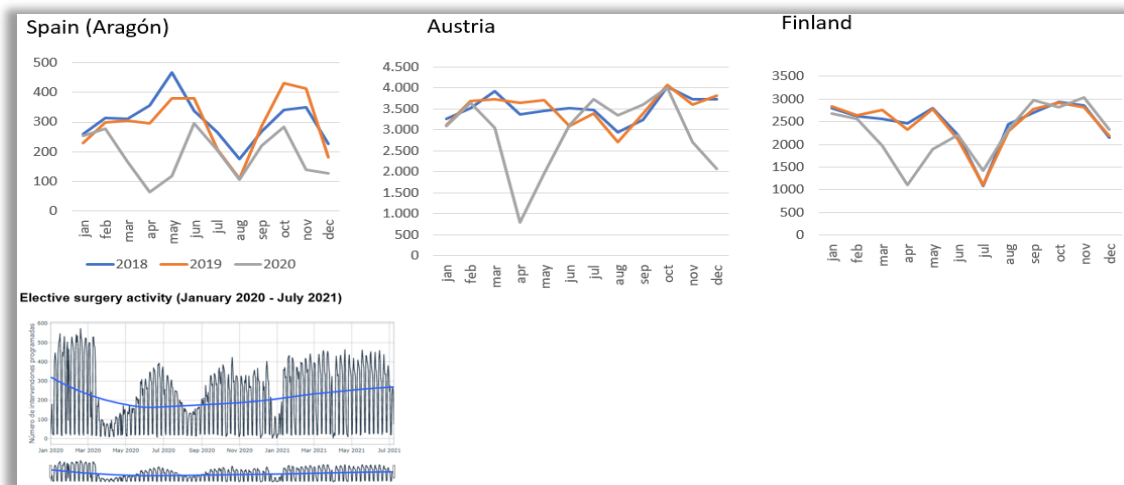


Use Case A - <https://doi.org/10.5281/zenodo.5148014>
Use Case B - <https://doi.org/10.5281/zenodo.5148022>
Use Case C - <https://doi.org/10.5281/zenodo.5148032>
Use Case D - <https://doi.org/10.5281/zenodo.5148040>

Federated solution



- In **over 20 PHIRI data hubs**, data is mobilized and ready to be analyzed in a distributed manner
- In **12 data hubs**, the PHIRI-app Docker is already deployed and tested
- First results are expected in **May 2022** and will be published on the **Health Information Portal**





Federated solution

- Demonstrate how a broad variety of population health data can be pooled and/or reused in a distributed way across Europe
- Advantage of not moving data out of the silos and thus protecting privacy. Only non-personal aggregated data were produced and exchanged across borders
- Capacity building in the PHIRI data hubs is needed: PHIRI developers forum



Future European perspectives

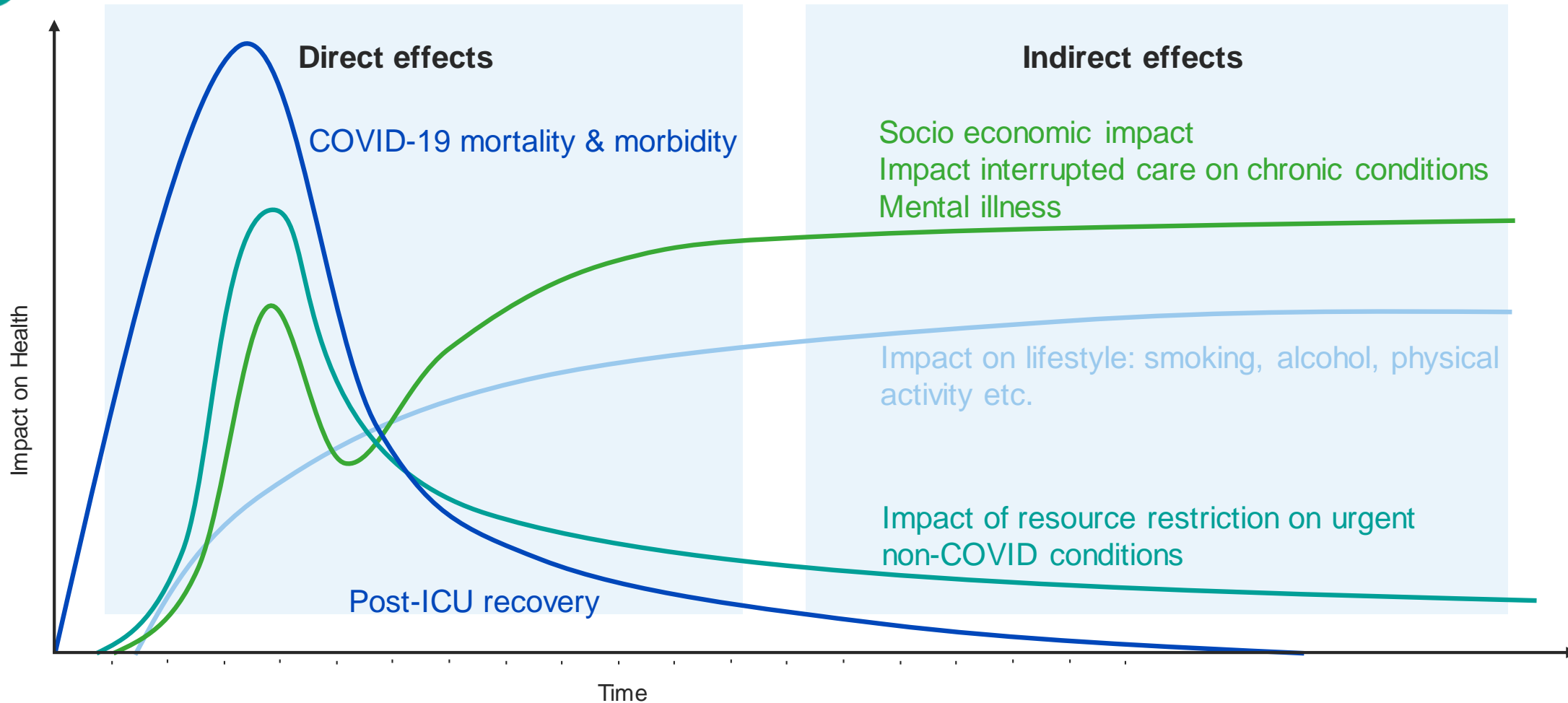
European Health Data Space 2 pilot project:

to investigate the **technical tools** and set up the **metadata standards** which can allow researchers to

- query the metadata catalogs of all the nodes in the data space, in every health domain
- to request selected data via a single common form
- to analyze data across national nodes

→ Building the first effective and operational version of the European Health Data Space

(In)direct impact of COVID-19 on population health






PHIRI

Population Health Information
Research Infrastructure

Thank you!

Name: Petronille Bogaert, Miriam Saso, Nienke Schutte,
Pascal Derycke and Barthélémy Moreau
E-mail: PHIRI.coordination@sciensano.be
Follow us on Twitter:  @PHIRI4EU



www.phiri.eu



This project has received
funding from the European
Union's Horizon 2020
research and innovation
programme under grant
agreement No 101018317

